

TEMP-07-CARD: Hyperthermia Avoidance in Cardiac Surgery

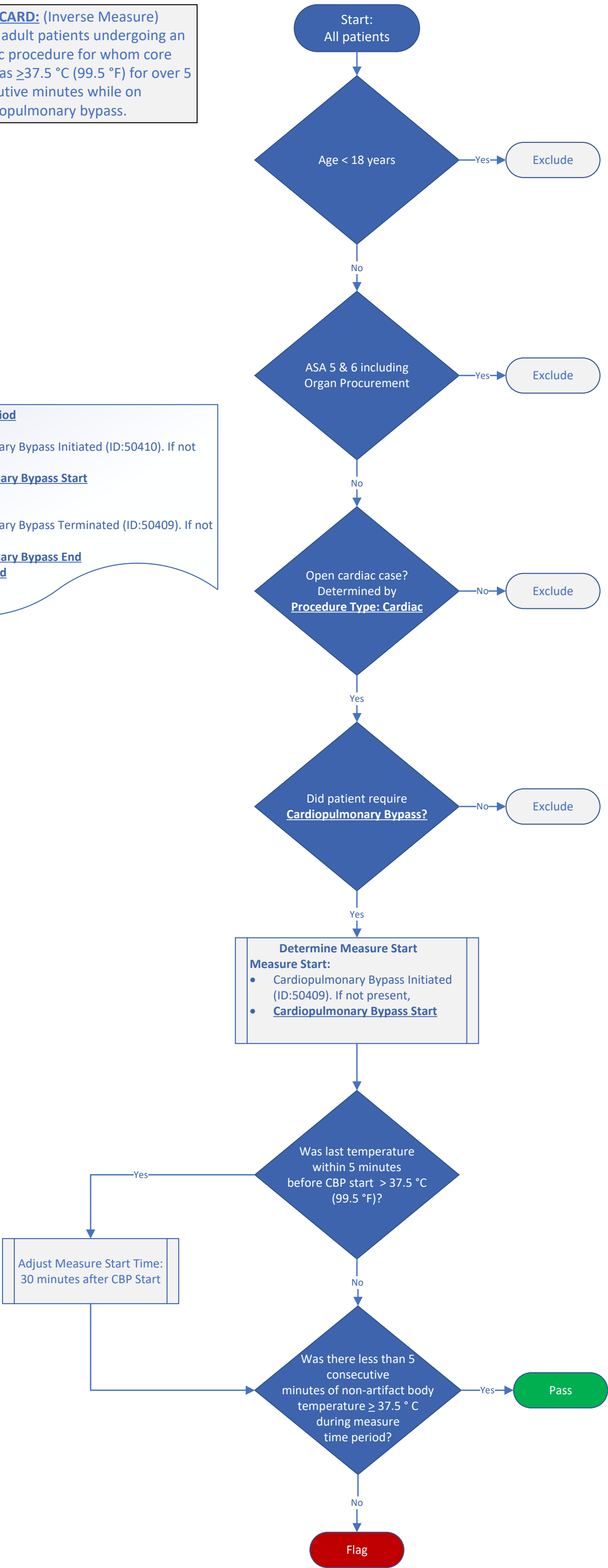
**TEMP-07-CARD:** (Inverse Measure)  
Percentage of adult patients undergoing an open cardiac procedure for whom core temperature was  $\geq 37.5^{\circ}\text{C}$  ( $99.5^{\circ}\text{F}$ ) for over 5 consecutive minutes while on cardiopulmonary bypass.

**Measure Time Period**  
**Measure Start:**

- Cardiopulmonary Bypass Initiated (ID:50410). If not present,
- Cardiopulmonary Bypass Start**

**Measure End:**

- Cardiopulmonary Bypass Terminated (ID:50409). If not present,
- Cardiopulmonary Bypass End**
- Anesthesia End**



All core temperature measurements will be prioritized over near-core measurements with hierarchy applied in the following order:

- Arterial Bypass Cannula Temperature (Concept ID: 3263)
- Nasopharyngeal (Concept ID: 3059)
- Esophageal (Concept ID: 3055)
- Blood (Concept ID: 3056) or keyword 'PA catheter'
- Bladder (Concept ID: 3058)
- Rectal (Concept ID: 3061)
- Zero-flux thermometer (non-core) – via keyword search of temperature routes
- Other non-core routes (axillary, oral, skin, temporal, tympanic, unspecified)

Artifact Algorithm

- Less than  $32.0^{\circ}\text{C}$  ( $89.9^{\circ}\text{F}$ )
- Greater than  $40.0^{\circ}\text{C}$  ( $104.0^{\circ}\text{F}$ )
- Any minute-to minute jumps  $> 1^{\circ}\text{C}/1\text{min}$ 
  - Example:  $0.25^{\circ}\text{C}/15\text{s}$ ,  $0.5^{\circ}\text{C}/30\text{s}$ ,  $1^{\circ}\text{C}/1\text{min}$